



WASHINGTON DEPARTMENT OF FISH AND WILDLIFE PRIORITY HABITATS AND SPECIES REPORT

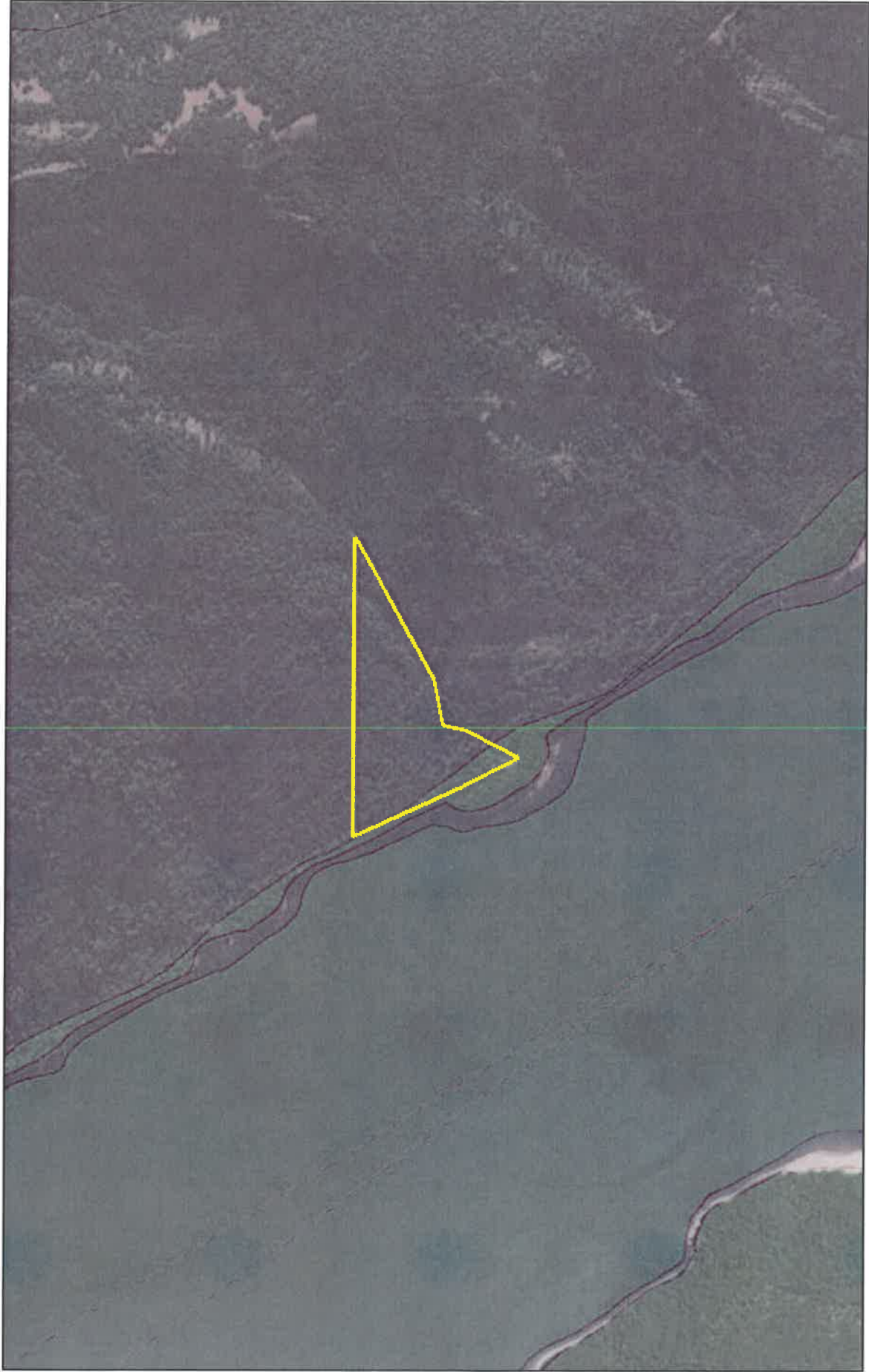
SOURCE DATASET: PHSPlusPublic
REPORT DATE: 09/05/2017 7.50

Query ID: P170905074950

Common Name Scientific Name	Site Name Source Dataset Source Record	Priority Area Occurrence Type More Information (URL) Mgmt Recommendations	Accuracy	Federal Status State Status PHS Listing Status	Sensitive Data Resolution	Source Entity Geometry Type
Notes	Source Date					
Mountain goat Oreamnos americanus	LAKE KATCHESS WINTER PHSREGION 901291	Regular Concentration Regular concentration	1/4 mile (Quarter)	N/A N/A	N AS MAPPED	WA Dept. of Fish and Wildlife Polygons
Northern Spotted Owl Strix occidentalis	WS_OwlStatus_Buf	N/A Management Buffer Management buffer	NA	PHS LISTED Threatened Endangered	Y TOWNSHIP	WA Dept. of Fish and Wildlife Polygons
Northern Spotted Owl Strix occidentalis	WS_OccurPoint 90436 July 18, 1991	http://wdfw.wa.gov/publications/pub.php? Occurrence Biotic detection	Map 1:100,000 <=	PHS LISTED Threatened Endangered	Y TOWNSHIP	WA Dept. of Fish and Wildlife Points
Northern Spotted Owl Strix occidentalis	WS_OccurPoint 105128 May 08, 1998	http://wdfw.wa.gov/publications/pub.php? Breeding Site Biotic detection	GPS	PHS LISTED Threatened Endangered	Y TOWNSHIP	WA Dept. of Fish and Wildlife Points
Wolverine Gulo gulo	WS_OccurPoint 60805 April 14, 1999	http://wdfw.wa.gov/publications/pub.php? Occurrence Biotic detection	1/4 mile (Quarter)	PHS LISTED Candidate Candidate	Y TOWNSHIP	WA Dept. of Fish and Wildlife Points
Wolverine Gulo gulo	WS_OccurPoint 133648 April 14, 1999	N/A Occurrence Biotic detection	GPS	PHS LISTED Candidate Candidate	Y TOWNSHIP	WA Dept. of Fish and Wildlife Points

DISCLAIMER: This report includes information that the Washington Department of Fish and Wildlife (WDFW) maintains in a central computer database. It is not an attempt to provide you with an official agency response as to the impacts of your project on fish and wildlife. This information only documents the location of fish and wildlife resources to the best of our knowledge. It is not a complete inventory and it is important to note that fish and wildlife resources may occur in areas not currently known to WDFW biologists, or in areas for which comprehensive surveys have not been conducted. Site specific surveys are frequently necessary to rule out the presence of priority resources. Locations of fish and wildlife resources are subject to variation caused by disturbance, changes in season and weather, and other factors. WDFW does not recommend using reports more than six months old.

WDFW Test Map



September 5, 2017

- PHS Report Clip Area POLY
- QTR-TWP
- AS MAPPED
- TOWNSHIP
- PT
- SECTION
- LN

1:19,842

0 0.15 0.3 0.6 mi

0 0.275 0.55 1.1 km

Source: Esri, DigitalGlobe, GeoEye, Earthstar Geographics, CNES/Airbus DS, USDA, USGS, AeroGRID, IGN, and the GIS User Community